

LELO

LELO DOT™

USER MANUAL



Experience a new type of stimulation  
for a new kind of orgasm  
that feels much stronger  
and more focused on your pleasure points.

**Enjoy it often, wisely and with care.**

Congratulations on acquiring LELO DOT™. Before getting more closely acquainted with it, please take a moment to look through this user manual.

**IMPORTANT:** Your pleasure object has been locked for transportation. To unlock, simply connect the charger or see below.

### **SAFETY**

This device should be used by people aged 18 years and over. Persons with reduced physical, sensory or mental capabilities or lack of experience and knowledge should use the device only if they have been given supervision or instruction concerning the use of the device in a safe way and understand the hazards involved. Minors should not use the device and should not clean and/or use the device unsupervised.

## COMPLIANCE STATEMENT

**a. WARNING:** Please take note that changes or modifications not expressly approved in writing by the party responsible for compliance could void the user's authority to operate the equipment and/or void any relevant warranties.

### **b. FCC and IC statements:**

This device complies with Part 15 of the FCC Rules and Industry.

Canada license-exempt RSS Operation is subject to the following two conditions:

- (1) This device may not cause harmful interference, and
- (2) This device must accept any interference received, including interference that may cause undesired operation.

This class B digital apparatus complies with Canadian ICES-003.

### **b. Déclarations de la FCC et de l'IC :**

Cet appareil répond aux exigences de l'article 15 du Règlement de la FCC et de l'industrie.

RSS exempt de licence au Canada – Son fonctionnement est soumis aux deux conditions suivantes :

- (1) cet appareil ne doit pas causer d'interférences nuisibles, et
- (2) doit accepter toute interférence reçue, notamment celles susceptibles d'entraîner un fonctionnement indésirable.

Cet appareil numérique de classe B est conforme à la norme canadienne NMB-003.

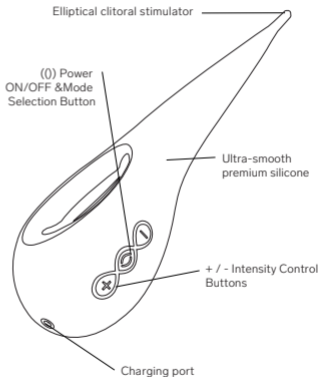
NOTE: This equipment has been tested and found to comply with the limits for a Class B digital device, pursuant to Part 15 of the FCC Rules. These limits are designed to provide reasonable protection against harmful interference in a residential installation. This equipment generates, uses and can radiate radio frequency energy and, if not installed and used in accordance with the instructions, may cause harmful interference to radio communications. However, there is no guarantee that interference will not occur in a particular installation. If this equipment does cause harmful interference to radio or television reception, which can be determined by turning the equipment off and on, the user is encouraged to try to correct the interference by one or more of the following measures:

- Reorienting or relocating the receiving antenna.
- Increase the separation between the equipment and receiver.
- Connecting the equipment into an outlet on a circuit different from that to which the receiver is connected.
- Consulting the seller, the device dealer or an experienced radio/TV technician for help.

## GETTING STARTED

- Before the first use, charge your LELO DOT™ for 2 hours.
- Press and hold the **(O)** button to turn it on.
- Press the **(O)** button to switch between 8 modes.
- Use the **+** and the **-** buttons to increase or decrease the intensity.
- Press and hold the **(O)** button to turn off.

## GETTING TO KNOW YOUR LELO DOT™

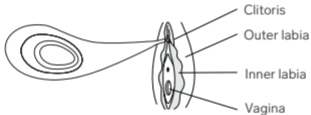


## USING LELO DOT™

- How to hold



- Where to place on the body



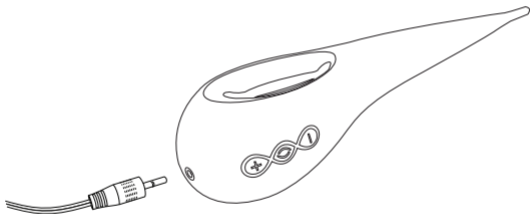
Keep in mind that LELO DOT™ may initiate automatic shutdown if pressed too hard against the body. This automatic feature assures the motor doesn't overheat if the product is misused.

**Tip:** For an even more pleasurable sensation, apply a liberal amount of LELO Personal Moisturizer to your body and to LELO DOT™ before and during use.



## CHARGING YOUR LELO DOT™

- Insert the DC plug into the DC port at the base of your LELO DOT™
- Insert the mains plug into a USB Port. The LED on the interface of your LELO DOT™ will pulse to indicate it is charging. When it is fully charged, the LED will emit a steady glow. When the battery is running low, the LED on your LELO DOT™ will emit a blinking white light.



Only use original chargers provided by LELO with your LELO DOT™.

## **CLEANING, STORAGE, AND SAFETY**

Using LELO DOT™ with hand creams or silicone-based lubricants may make the silicone permanently tacky.

LELO DOT™ is fully waterproof, making cleaning simple. Rinse and spray with LELO Toy Cleaner, then rinse again and allow it to dry.

Always clean your LELO DOT™ thoroughly before and after each use. You can wash the silicone with warm water and antibacterial soap, rinse with clean hot water, and pat dry with a lint-free cloth or towel. Never use cleansers containing alcohol, petrol, or acetone.

Avoid leaving your LELO DOT™ in direct sunlight and NEVER expose it to extreme heat. Store your LELO DOT™ in a dust-free place and keep it away from products of other materials.

Do not bend your LELO DOT™ too aggressively to avoid damaging the soft and bendable tip permanently.

The appliances must only be supplied at Safety Extra Low Voltage (SELV).



## TROUBLESHOOTING

### The LED on your LELO DOT™ does not pulse when the charger is connected:

- The battery is drained and will require several minutes to acknowledge that it is being charged.
- The charger is not properly connected. Check wall and DC sockets.

### Your LELO DOT™ does not activate when the (O) button is pressed:

- The battery is empty. Recharge your LELO DOT™.
- The interface of your LELO DOT™ is locked. Hold down + and – for 3 seconds.

If you experience any other problems with your LELO DOT™ or if you have any questions regarding the operation, please contact: [customercare@lelo.com](mailto:customercare@lelo.com)

## **SPECIFICATIONS**

<b>MATERIALS:</b>	Body-safe silicone, ABS Plastic
<b>FINISH:</b>	Smooth
<b>SIZE:</b>	60 x 46 x 165 mm / 2.4 x 1.8 x 6.5 in
<b>WEIGHT:</b>	98 g / 3.5 oz
<b>BATTERY:</b>	Li-Ion 520 mAh 3.7 V
<b>CHARGING:</b>	Up to 2 h at 5.0 V 500 mA
<b>USER TIME:</b>	Up to 2 h
<b>STANDBY:</b>	90 days
<b>FREQUENCY:</b>	133 Hz
<b>MAX. NOISE LEVEL:</b>	< 60 dB
<b>INTERFACE:</b>	3 buttons

## **REGISTER WARRANTY**

To activate your 1-year limited warranty, register the number provided on the LELO Authenticity Card at [LELO.COM/SUPPORT](http://LELO.COM/SUPPORT).

## **1-YEAR WARRANTY**

LELO warrants this pleasure object for a period of ONE (1) YEAR, after the date of original purchase, against defects due to faulty workmanship or materials. The warranty covers working parts that affect the function of the pleasure object. It does NOT cover cosmetic deterioration caused by fair wear and tear or damage caused by accident, misuse, or neglect. Any attempt to open or take apart the pleasure object (or its accessories) will void the warranty. If you discover a defect and notify LELO during the warranty period, LELO will, at its discretion, replace the pleasure object free of charge. Claims under warranty must be supported by reasonable evidence of the date of claim is within the warranty period. To validate your warranty, please keep your original purchase receipt together with these warranty conditions for the duration of the warranty period. To claim your warranty, you must log in to your account at [LELO.COM](http://LELO.COM) and then select the option to make a warranty claim. Shipping costs are non-refundable. This undertaking is in addition to the consumer's statutory rights and does not affect those rights in any way.

## DISPOSAL INFORMATION

**Disposal of old electronic equipment (applicable in the EU and other European countries with separate waste collection systems):**

The crossed-out dustbin symbol indicates that this pleasure object should not be treated as household waste, but rather be brought to the appropriate collection point for the recycling of electrical and electronic equipment.



**DISCLAIMER:** Users of this product do so at their own risk. Neither LELO nor its retailers assume any responsibility or liability for the use of this product. Changes or modifications not expressly approved by the manufacturer could void the user's authority to operate the equipment. The model may be changed for improvements without notice.

© 2022 LELo AB. All rights reserved.

LELO AB, Karlavägen 41, 114 31 Stockholm, Sweden.

Distributed in the US by LELo Inc., 5799 Fontanoso Way, San Jose, CA 95138, USA.

Distributed in Australia by LELo Oceania 6 Prohasky Street, Port Melbourne, VIC 3207, Australia.

Designed and developed by LELo Sweden.

Made in China.

US and International patents or patent applications apply to this product:

visit <https://www.lelo.com/intellectual-property>

**[www.lelo.com](https://www.lelo.com)**